

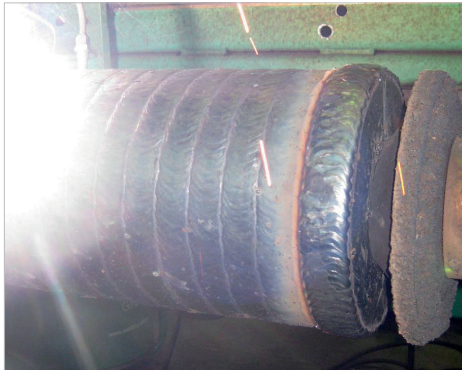
APPLICATIONS FOR STEEL



WE SOLVE YOUR WEAR PROBLEMS

Corodur® Fülldraht has been an industry leader in the area of wear protection for 35 years.

We specialise in the manufacture of high quality consumables for arc-welding and for thermal spraying. The product range includes flux-cored wires for OPEN ARC (FCAW), MIG (MGAW) and submerged arc (SAW) welding. We also supply stick electrodes of equivalent composition as well as a range of tungsten carbide products for the most extreme wear conditions.



TRANSPORT ROLL FROM HOT STRIP MILL



SINTER CRUSHER



DEPOSIT COROLIT 21-G



HIGH QUALITY SUB ARC WELDING PRODUCTS

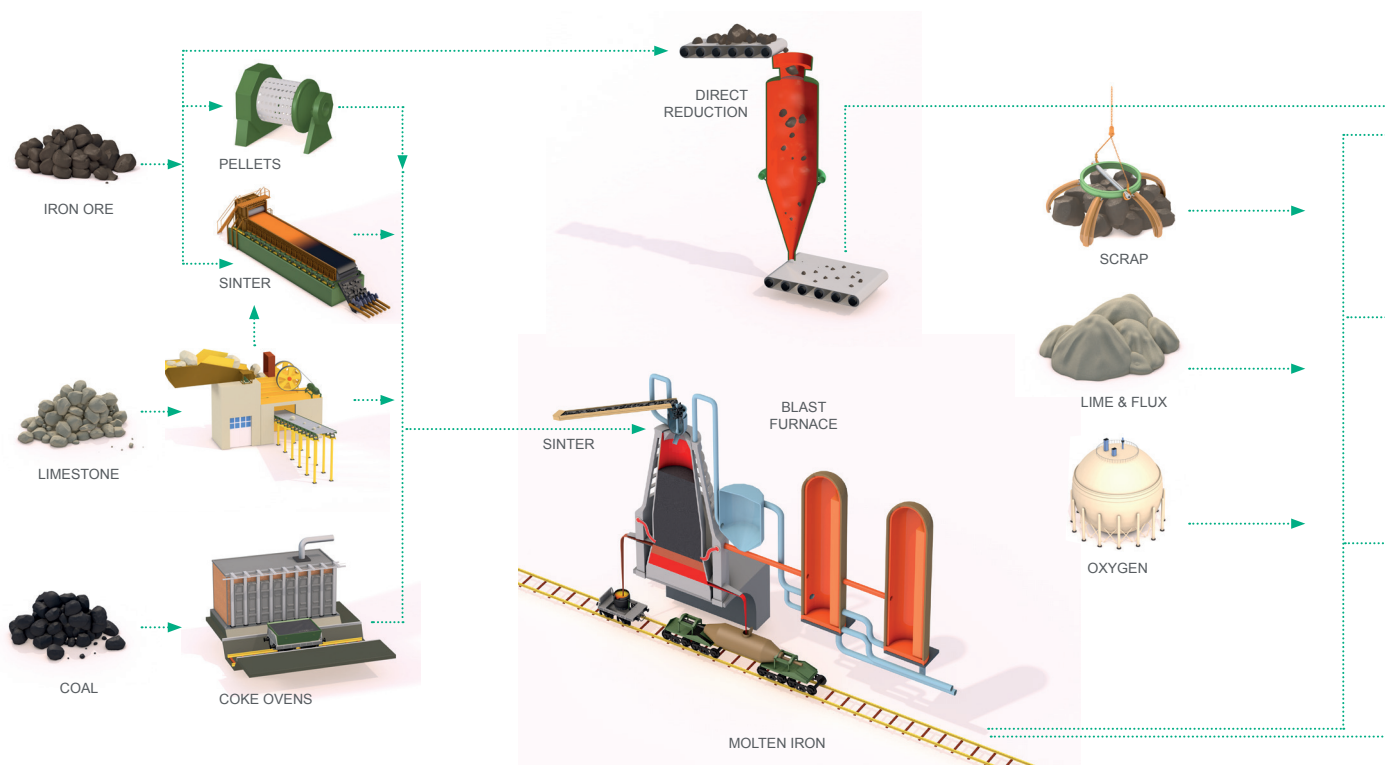


CONTINUOUS CASTING ROLL



THERMAL SPRAY PRODUCTS FOR SHAFT REPAIR

Corodur understands the complete steelmaking process



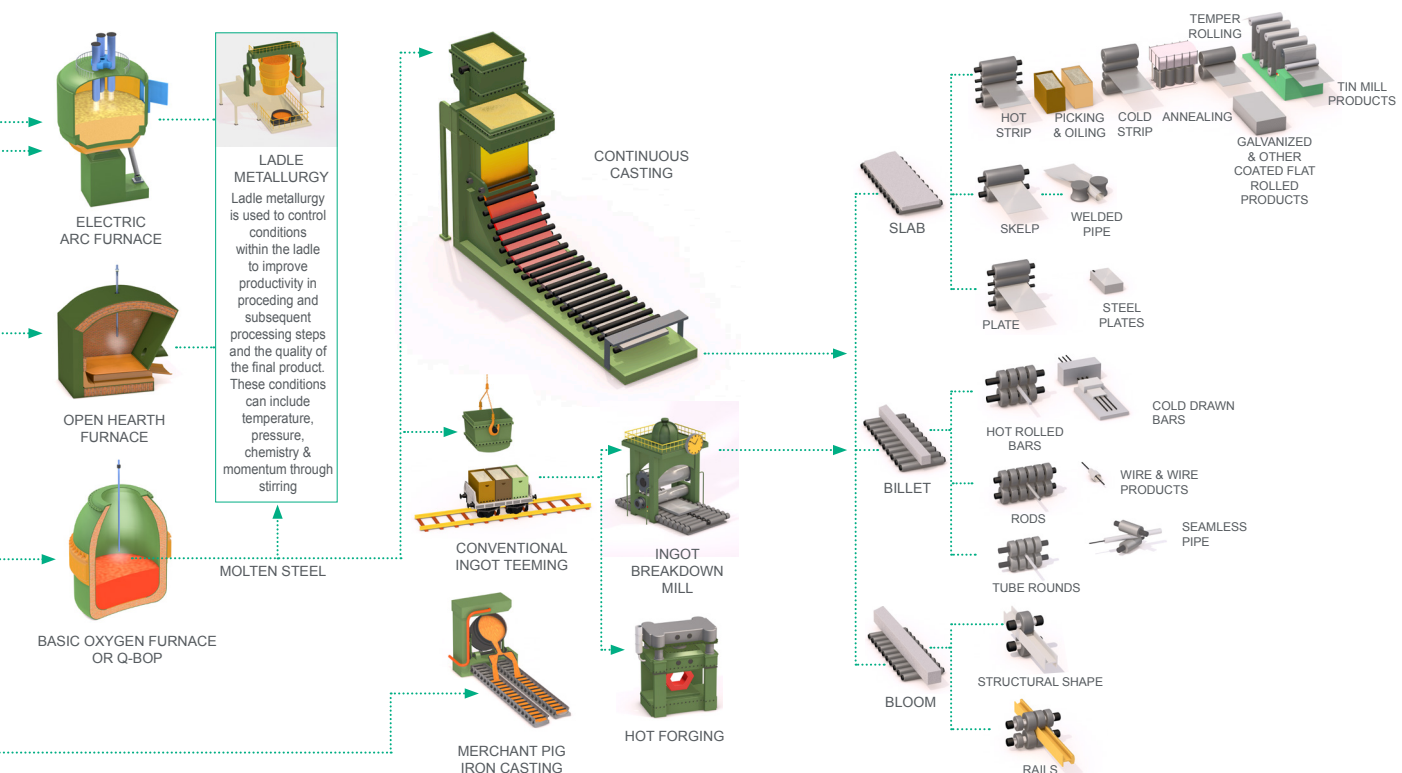
Corodur® Solutions for Steel

You can rely on Corodur® to provide tailored end-to-end wear protection solutions, allowing you more time to focus on your core business needs. Our qualified and experienced service team will guide you and recommend the right product and method. We develop the best solution for your specific needs.

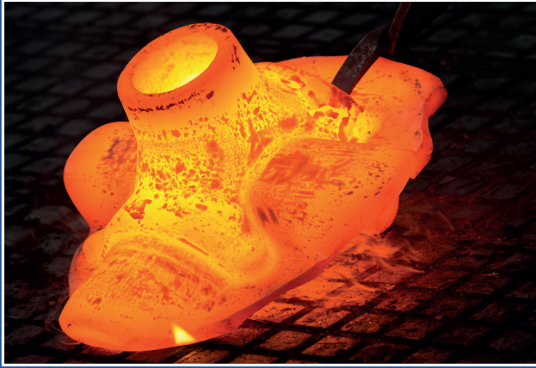
Flux Cored Wires	Hardness	Applications
CORODUR® 65	63 - 65 HRc	Sinter crusher and Sinter bars
CORODUR® 80	65 - 68 HRc	Parts in hot screening units, grates, sinter stars, deflector table, screening plates
CORODUR® 601	55 - 58 HRc	Forming rollers, vertical ups, conveyor screws
CORODUR® 250 K	220 – 250 HB Work hardened: 500 HB	Roller bearings, coupling shafts, crane wheels
CORODUR® NiFe 36	140 - 160 HB	repair welding of cast iron
CORODUR® 182		Dissimilar joints between stainless steels and CrMo steels, heat resisting steels and repair of steels with limited weldability
CORODUR® 4028	46 – 48 HRc	Looper rolls, idler surfaces, buffer material for continuous rolls
CORODUR® 4351 N	38 – 43 HRc	Continuous casting rolls, wrapper mandrel, transport rollers
COROLIT 21-G	300 – 330 HB Work hardened: 45 HRc	Shear knives
CORODUR® WZ 57	50 – 53 HRc After annealing: 55 - 59 HRc	Slab shears, hot-forging dies, drawing dies, crushing equipment
CORODUR® 356 N	40 - 42 HRc	Continuous casting rolls, cladding or rewelding of hot rolling mills and caster

Benefit from our experience and our know-how!

and can provide effective solutions every step of the way



APPLICATION FOCUS



CORODUR® impact and heat resistant consumables

Even under the toughest working conditions, CORODUR® Flux Cored Wires have superb weldability and superior performance, increasing the lifetime of hot working tools and reducing maintenance downtime.

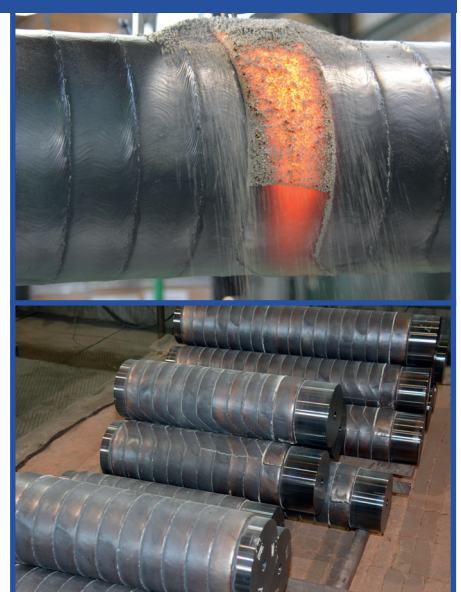
Our state-of-the-art product: Corodur® 80 OA

Why work with CORODUR®?

Corodur® have extensive knowledge of the Steel Industry and are specialists in the refurbishment and fabrication of the following components:

- Continuous Casting Rolls / Furnace Rolls
- Work Rolls / Back-up Rolls
- Run-out Table Rolls
- Pinch/Wrapper Rolls
- Galvanizing Pots
- Sintering
- Forming Rolls
- Mandrels

Improve process efficiency with CORODUR®!



CORODUR
Das Original FÜLLDRAHT GMBH

CORODUR FÜLLDRAHT GMBH
Gießerallee 37
D - 47877 Willich

Telephone: +49 (0) 2154 8879-0
Fax: +49 (0) 2154 8879-79

info@corodur.de | www.corodur.de